

# The Times - News

Serving East Juab County - A Nice Place To Live!

Volume 113, No. 30

July 29, 2015

Single Copy Price

75¢

## Utahns need to curb wasteful water practices

By Myrna Trauntvein

Times-News Correspondent

Utahns are widely regarded as among the most wasteful water users in the nation and Nephi is one of the worst water wasters in the state.

Randy McKnight, city administrator, gave Nephi City Council an update on the water supply conditions in the city.

"According to national statistics, Utahns use more water than their neighbors across the West," said McKnight.

Utah is the second-driest state in America and Utahns are the second-most prolific consumers of water in the nation. The state receives the second lowest annual rainfall at 13-inches of rain on average in one year.

Utah's baseline rate of water consumption per person, per day, is 295 gallons, according to Utah Division of Water Resources Conservation Program data. Only Nevada uses more.



**DEAD FISH AND MUD FLATS** • The seagulls are busy at Mona Reservoir (Mud Flats) as most of the water is gone and all that is left at the dam are mud flats and dead fish. Just one small stream through the middle is all that's left of this year's water. The state and local government are calling for a 25% cut in water use. Time to start thinking about rocks rather than grass in your front yard.

See **Save Water** on page 2

## Recycling options still on the minds of city council members

By Myrna Trauntvein

Times-News Correspondent

Nephi has been considering ways the city might add recycling capabilities for residents since the paper waste recycling was taken from the city.

"The city staff is continuing to examine alternatives and has reviewed recycling successes and challenges in other communities," said Randy McKnight, city administrator.

McKnight presented the most recent results of the city's latest explorations of recycling alternatives.

Nephi City is a member of and participates in the Recycling Coalition of Utah (RCU).

McKnight said that the city was represented on a panel at the association's conference to discuss the challenges of recycling in rural Utah.

RCU is a coalition of municipalities, businesses, insti-

tutions and individuals committed to improving recycling in Utah. As the State of Utah's official resource on recycling, RCU provides value to existing and new members committed to increasing and improving recycling, conservation and solid waste reduction in Utah.

Several conditions affect the availability of recycling opportunities in specific areas. These include population density, transportation costs, market prices and demand for recycled materials, proximity to commercial recycling entities, and the willingness to pay for recycling services.

He said that one lesson that has come more into focus is that recycling is not free.

According to a recent study from Utah Valley University, Utah still ranks as the 42nd worst state for recycling. One reason why that may be is because, for many people, it's a hassle.

McKnight shared an article

from U.S. News, entitled "Recycling Vexes Rural Areas."

One of the examples in the article was of Grant Davis, an elementary school principal, who was concerned about what would happen to the 20-million bottles of water dropped off at Charleston, W. Va., after a chemical spill contaminated the culinary water supply.

"The result: All but an estimated three million of the empty bottles were dumped in landfills," the article stated.

One of the challenges of rural recycling is that drop-off sites are more than 25-miles away.

The article, which McKnight showed via a projector which he beamed on a wall of city hall, indicated that many small towns and rural counties struggle to offer recycling services, especially with tight government budgets, limited access to recycling processors and wide fluctuations in the market for recyclable materi-

als.

"We were fortunate to have paper recycling available in our area during a time when market prices for recycled paper justified the transportation and other costs related to gathering donated paper and hauling it by truck to a processing center," said McKnight.

That opportunity ended in the Nephi area when market prices diminished, and it was no longer sustainable to collect paper in the valley and haul it north for processing.

"Getting that service back will require some type of subsidy for hauling costs," said McKnight.

Shawn Lindsey, quoted in the article, is a recycling expert who advises the not-for-profit Center for Rural Strategies, said some towns cannot get vendors to bring in recycling containers because it takes weeks to fill a bin, tying up a company asset and providing an insufficient return.

It is less expensive to dump trash, including recyclables, in a landfill in most rural areas. The same is not true of large cities. The price, said the article, can cost \$20 a ton in Athens, Tenn, and more than \$100 a ton in New York, making it more appealing to use recycling.

"Other recycling opportunities also require subsidies. For example, in communities where curbside recycling is available, residents and businesses pay a monthly fee to help pay the cost for the containers, the collection, and the transportation of the collected material," said McKnight.

Another problem is that people can contaminate recyclable with regular garbage. That can cause an entire 20-yard container to have to be discarded. That causes contamination and

See **Recycle** on page 2

## Miss Juab County Scholarship Pageant will be held August 3rd

The Juab County Fair will host the Miss Juab County Scholarship Pageant on Monday, August 3 where the new Miss Juab County 2015 will be crowned. The pageant will be held in the Jr. High School Auditorium at 7:00 p.m.

Seven contestants will vie for the title.

Jennifer Gibson is the daughter of Jason and Angi Gibson of Nephi. Jennifer will perform a vocal piece by Elton

John for her talent. Jennifer plans on attending MATC Cosmetology program in the fall.

Shaylee Stoneman is the daughter of Lee and Jessica Stoneman of Nephi. Shaylee will perform a Cheer/Dance

routine for her talent. Shaylee plans on attending Snow College and Utah State University to major in Education.

Alyssa Cowan is the daughter of Chad and Stephanie Cowan of Nephi. Alyssa will

perform a Lyrical Dance Solo for her talent. Alyssa is the Dance Sterling Scholar for JHS

See **Miss Juab** on page 2



Jennifer Gibson



Shaylee Stoneman



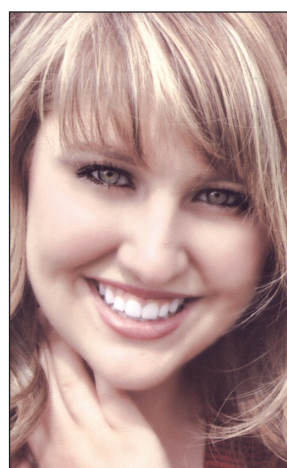
Alyssa Cowan



Erika Stanley



McKenzie McPherson



KaDi McKeachnie



Emma Brooks



Subscribe Today • Call 623-0525 to start your subscription!

